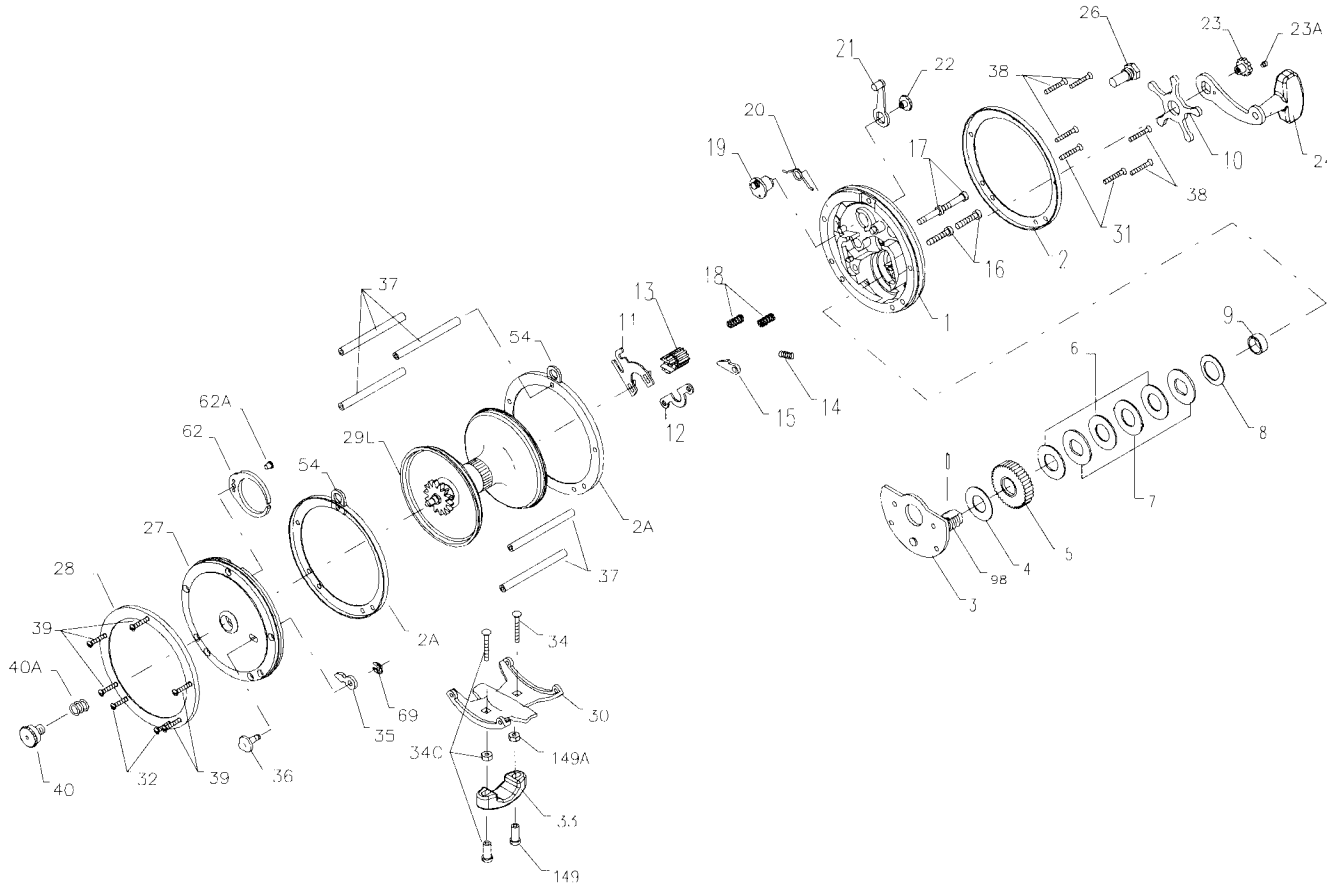




PARTS AND PRICE LIST FOR MODEL 112H



Key No.	Part No.	Description	Price
1	001 112H	Right Side Plate	\$5.45
2	002 112HO	Outer Right Side Ring	3.75
2A	002 112HI	Inner Ring (2 req.)	3.75
3	003 112H	Bridge w/Sleeve	8.05
4	004 060	Fiber Washer	.45
5	005 500	Main Gear	5.10
6	006 309	Drag Washer (3 req.)	.90
7	007C500	Metal Drag Washer Set (3 req.)	3.00
8	008 060	Tension Spring	.50
9	009 060	Spacing Sleeve	.90
10	010 060	Star Drag Wheel	2.85
11	011 099	Eccentric Jack	1.25
12	012 500	Pinion Yoke	.95
13	013 500	Pinion	3.55
14	014 099	Dog Spring	.45
15	015 309	Dog	.90
16	016 060CH	Lower Bridge Screw (2 req.)	.45
17	017 060CH	Upper Bridge Screw (2 req.)	.45
18	018 060	Clutch Spring (2 req.)	.45
19	019 250	Eccentric	2.05
20	020 060L	Eccentric Spring	.45
21	021 049	Eccentric Lever	1.80
22	022 099	Eccentric Screw	1.50
23	023 060	Handle Screw	1.75
23A	110 060	Handle Lock Screw	.45

Key No.	Part No.	Description	Price
24	024 112H	Handle	\$8.95
26	026 155	R.S. Bearing	2.05
27	027 112H	Left Side Plate	6.25
28	028 112HO	Outer Left Side Ring	3.75
29	029L112H	Spool	20.00
30	030 066	Stand	6.60
31	039 003	R.S. Stand Screw (2 req.)	.40
32	032 017	L.S. Stand Screw (2 req.)	.40
33	033 113	Rod Clamp	4.00
*	* 033R200	Ringed Rod Clamp (Optional)	6.25
34	034 045	Clamp Screw (2 req.)	1.00
34C	034C045	Rod Clamp Screw w/Nuts	2.50
35	035 060	Click Tongue	1.15
36	036N209	Click Button	1.05
37	037 065	Frame Post (5 req.)	1.90
38	039 009	R.S. Screw (5 req.)	.40
39	039 003	L.S. Screw (5 req.)	.40
40	040 060	L.S. Bearing	2.50
41	041 060	L.S. Bearing Spring	.80
62	062 309	Click Spring	1.70
62A	063 209	Click Spring Screw	.50
69	069B600	Retaining Ring	.90
98	098 060	Gear Sleeve	4.00
149	149 045	Rod Clamp Nut (2 req.)	1.00
149A	149 200	Hex Nut (2 req.)	.50